



A Neighbourhood Plan for Elstree and Borehamwood



What is a Neighbourhood Plan?

- It is a document that includes planning policies to:
 - establish a vision for the parish
 - set out how land should be used in the parish
 - help to determine planning applications
- It is prepared by the community.
- Ultimately it will form part of the Hertsmere Local Plan, adding more local detail to the strategic planning policies.

Where the Neighbourhood Plan will sit

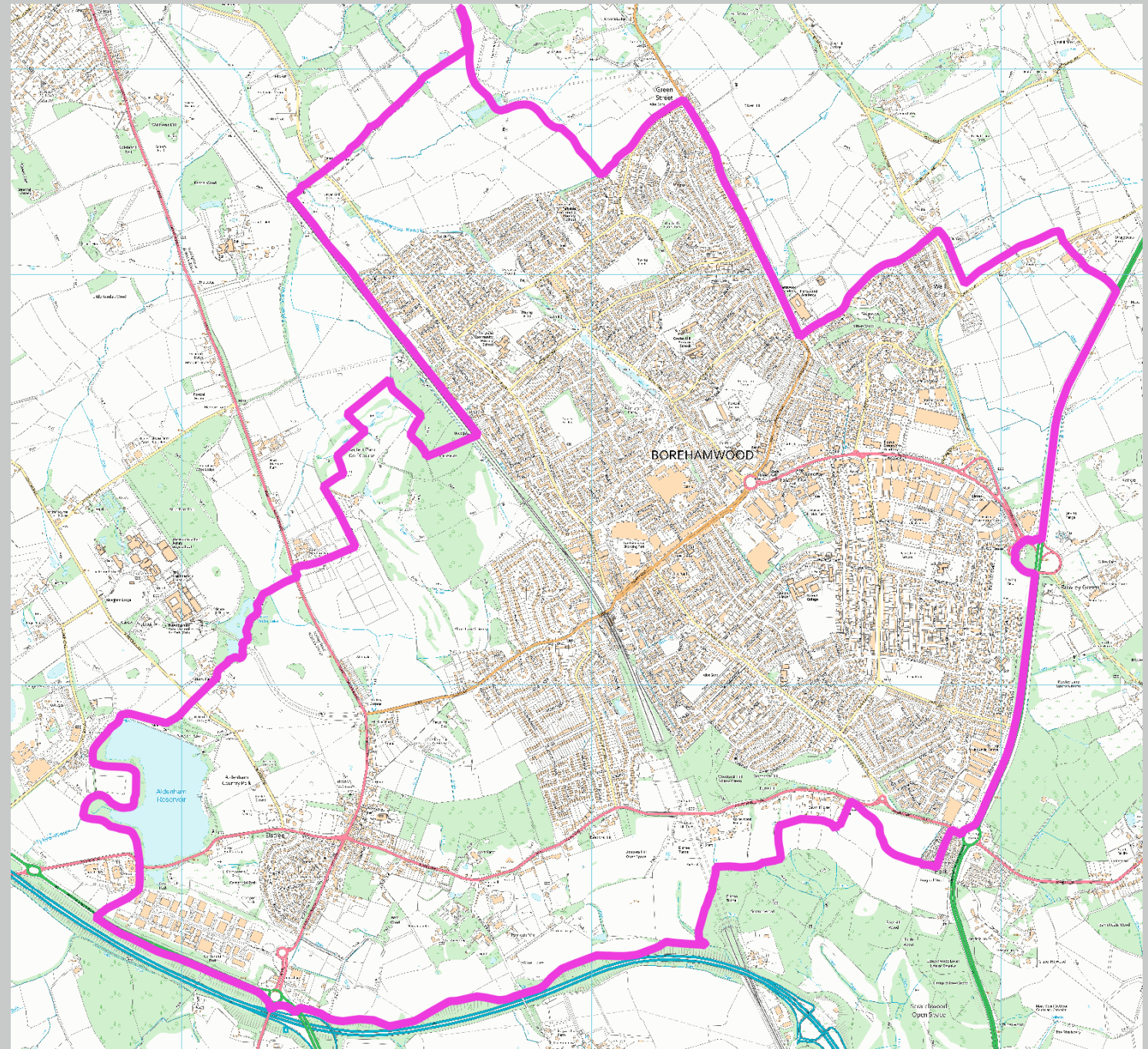
- National level: National Planning Policy Framework
- Strategic Level:
 - [Core Strategy](#) (PDF 1.70mb), adopted January 2013.
 - [Elstree Way Corridor Area Action Plan](#) (PDF 7.51mb), adopted July 2015; Find out more about the [Elstree Way Corridor Area Action Plan](#),
 - [Site Allocations and Development Management \(SADM\) Policies Plan](#) (PDF 7.57mb), adopted November 2016; Find out more about the [SADM Policies Plan](#).
 - [Policies Map](#).

A new Local Plan is being prepared: to 2038.

- Local level – The Neighbourhood Plan – which forms part of the development plan.

The Neighbourhood Plan covers the whole parish

- The settlements:
 - Borehamwood: with approx. 36,000 residents, is the largest town in Hertsmere borough.
 - Elstree: with approx. 1,700 residents, is the second largest village in the borough.
- And the areas of countryside in between.





What can we include in the Plan?

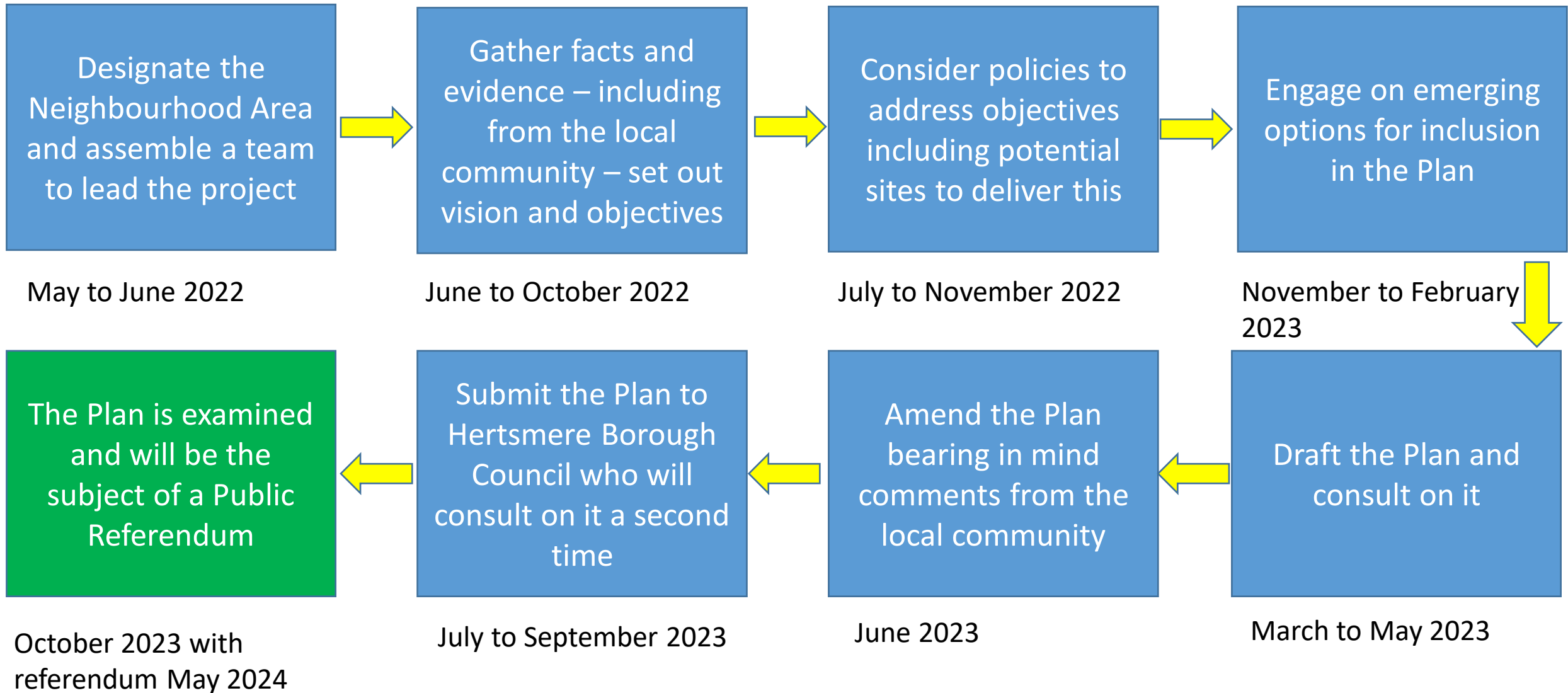
We can use the Plan to set out planning policies to:

- Protect valued green spaces and viewpoints and promote biodiversity
- Influence housing in terms of size, scale, type etc.
- Conserve local character and heritage assets
- Encourage sustainable transport – walking, cycling and public transport
- Promote the parish as a base for visitors
- Identify community facilities needed
- Support local businesses and attract new ones

Potential topics we can cover in the Neighbourhood Plan

Topic Area	Potential policy areas (not exhaustive, but to give some ideas)
Housing	<ul style="list-style-type: none">• Setting out where development should be directed• Housing mix, type, tenure, affordability
The natural environment	<ul style="list-style-type: none">• Identifying 'special' green spaces and protecting them in perpetuity• Mapping out 'green spaces and corridors' and identifying areas that should be improved/better linked• Safeguarding special views and viewpoints from development• Flood risk
The built environment	<ul style="list-style-type: none">• Design of development - to reflect local character, include sustainable design features, wildlife friendly features• Identifying buildings/structures that are historically important
Community facilities	<ul style="list-style-type: none">• Identifying where additional provision/ expansion is needed.
Getting around	<ul style="list-style-type: none">• Identifying where improvements might be made to walking / cycling paths to encourage more people to walk/cycle locally – 10 minute town / village concept• Car parking – provision, electric charging points
Local economy	<ul style="list-style-type: none">• Promoting sustainable tourism• Safeguarding important employment sites• Supporting opportunities for flexible working / start-ups etc.

The main steps involved in preparing the Plan...



Role of the Steering Group

- To oversee the Plan process
- To lead on particular topic areas
- Useful roles:
 - Someone to chair the group
 - Link to the Town Council (perhaps a local councillor)
 - Publicity / Social media / communications
 - Lead on each likely topic area
- Develop a project plan – with activities, milestones, costs, responsibilities



What are your skills, experience and interests?

Have we got a good geographic coverage?

What skills might be missing?



The Plan relies on community involvement

- We need to find out what the community would like the area to be like in the future.
- We are looking for volunteers to take part in the project
- We will be investigating different topics to include, for example: the environment, local history and heritage, walking and cycling and the local economy.
- There will be lots of opportunities to tell us your views about the issues
- Ultimately the Plan will go to a public referendum, which will

Engagement and communications

- Who should we engage?
- How should we engage?
- What do we want to know from them?